

May 11th, 2011

Materials Needed:

- ☐ Composition Notebook
- ☐ Orange Textbook

Minutes

Activity

2	Poll: Your AICE Exams
3 → 5	Warm Up
5	Assign Roles for <i>The Crucible</i>
2	<i>Crucible</i> SLM, Concept 3
5	Watch: First 3 Minutes of <i>Crucible</i>
Remaining	Read: <i>The Crucible</i> , Act I (until Proctor entrance)

John Proctor from *The Crucible* Says:

- If you were **absent due to AICE Exams yesterday**, please check the website—you missed about **9 slides worth of notes**.

Poll

A S S I G N M E N T

- ☐ Raise your hand if this AICE Exam applies to you:
 - ☐ Biology
 - ☐ Thinking Skills

Warm Up (5.11.11)

Volume-O-Meter: 0 (Silence)

Time: 4 Minutes

Share-Out: N/A

A
S
S
I
G
N
M
E
N
T

Today we'll start reading *The Crucible*, which is a play about the Salem Witch Trials of 1692. Hampton is a firm believer that plays are meant to be read aloud—plus we don't have enough take home copies for everyone. Therefore, think about what kind of role you wish to play.

1. Do you want a major role, a minor role, or no role at all? Explain your answer. Keep in mind, there only 6 or so major roles to go around. But, we will rotate roles occasionally if the need arises.

Assign Roles

A S S I G N M E N T

Directions:

- 23 Roles in total
- Most disorganized part before reading
- Roles are Category 1 or 2
 - 1 = Major Role; lots of speaking
 - 2 = Minor Role; some speaking
- Hampton will play **John Proctor** on most days
- Hampton is the ultimate authority in deciding roles

Assign Roles

A S S I G N M E N T

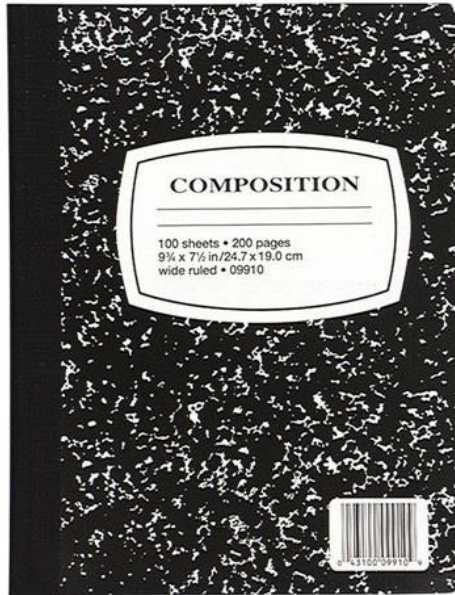
1. Narrator (1), says italicized actions—
2. Tituba (1), negro slave to Parris—
3. Samuel Parris (1), minister of Salem—
4. Abigail Williams (1), Parris' niece—
5. Rev. Hale (1), minister of the occult—
6. Elizabeth Proctor (1), wife of John Proctor—
7. Mary Warren (1), friend of Abigail—
8. **John Proctor (1), citizen of Salem; farmer – Mr. Hampton**
9. Giles Cory (1), citizen of Salem—
10. Susanna Walcott (2), friend of Abigail—
11. Mr. Putnam (2), citizen of Salem—

Assign Roles

A S S I G N M E N T

12. Mrs. Putnam (2), wife of Mr. Putnam—
13. Mercy Lewis (2), friend of Abigail –
14. Betty Parris (2), first accused of witchcraft—
15. Rebecca Nurse (2), the nurse—
16. Francis Nurse (2)—
17. Ezekiel Cheever (2), official of Salem—
18. Marshal Herrick (2), official of Salem—
19. Judge Hathorne (2), official of Salem—
20. Martha Corey (2), wife of Giles Cory—
21. Governor Danforth (2), official of Salem—
22. Sarah Good (2)—
23. Hopkins (2)—

Transition



SLM

<u>Unit Essential Question:</u> What can a story teach me about a period in history?	
<u>Resources:</u> <i>The Crucible</i>	
<u>Concept 1:</u> The Puritan Life 1. Who were the Puritans?	<u>Concept 2:</u> The Salem Witch Trials 2. What were the Salem Witch trials? 3. What was responsible for the beginning and end of the trials?
<u>Vocabulary</u> The Puritans, Samuel and Betty Parris, Bridget Bishop	<u>Vocabulary</u> Witchcraft, The Salem Witch trials, spectral evidence

Unit Essential Question:

What can a story teach me about a period in history?

Resources:

The Crucible

Concept 3:
Crucible, Acts I-II

4. How does the one event of Betty Parris falling ill lead to the Salem Witch Trials?

Concept 4:
Crucible, Acts III-IV

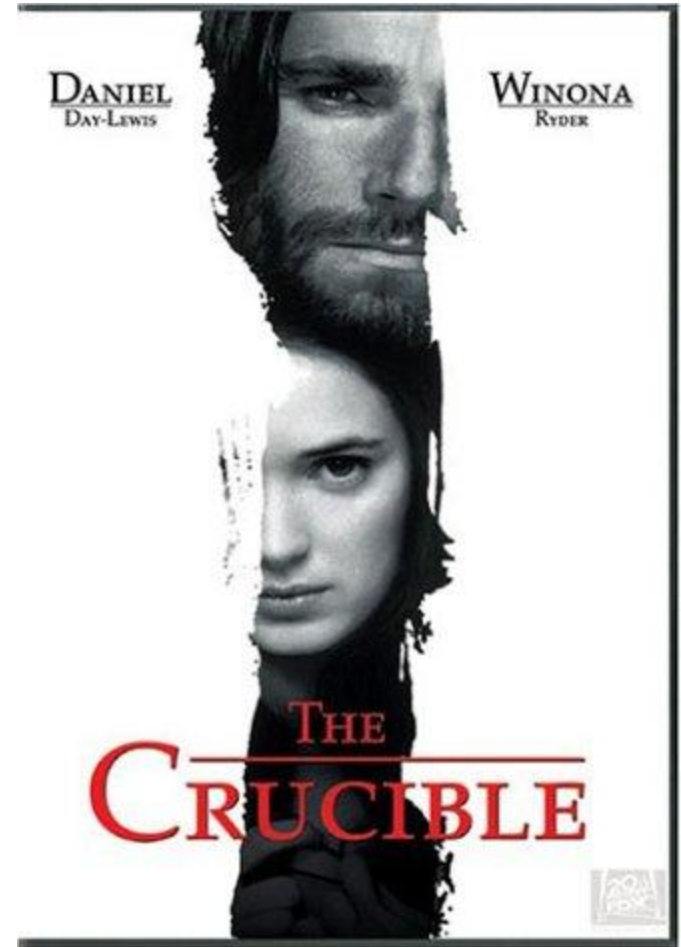
Vocabulary

Vocabulary

Watch: *The Crucible*

- ☐ First 3 or so minutes
- ☐ This scene is not in play, but is talked about in opening Act.

A
S
S
I
G
N
M
E
N
T



Roles for Today

A S S I G N M E N T

- ☐ Narrator (1), says italicized actions—
- ☐ Tituba (1), negro slave to Parris—
- ☐ Samuel Parris (1), minister of Salem—
- ☐ Abigail Williams (1), Parris' niece—
- ☐ Susanna Walcott (2), friend of Abigail—
- ☐ Mr. Putnam (1), citizen of Salem—
- ☐ Mrs. Putnam (1), wife of Mr. Putnam—
- ☐ Mercy Lewis (2), friend of Abigail--
- ☐ Mary Warren (2), friend of Abigail--
- ☐ Betty Parris (2), first accused of witchcraft--

The Crucible

A S S I G N M E N T

Directions:

- ☐ Turn to pg. 1129
- ☐ Read aloud
- ☐ Stop and Talk

